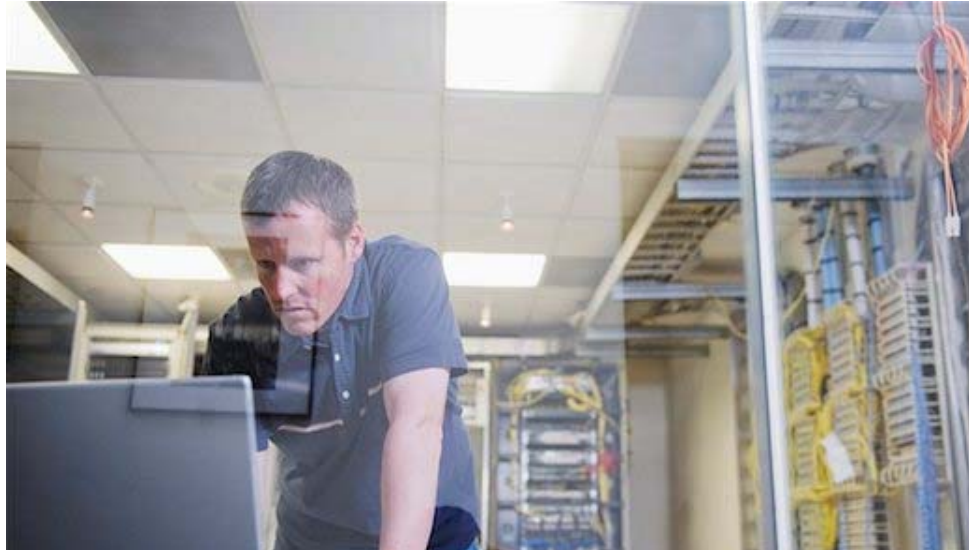


Virtualisation assessment

'Assessment in a box'

- Server inventory analysis – Inventory and usage statistics from your existing platform
- Consolidation assessment – Anticipated consolidation ratios
- Containment assessment – Future workload planning
- Virtualisation suitability analysis
- Requirements analysis – Virtualisation solution fit with your current environment
- TCO analysis – Direct and indirect costs of virtualisation solution compared to status quo
- ROI analysis – Estimated return on capital investments in virtual infrastructure
- NPV analysis – Estimated net present value savings (net benefit) in today's currency terms
- Environmental analysis – Estimated reduction in carbon emissions based on the estimated power and cooling consumption savings



When thinking about implementing a virtual environment, planning is key. One of the first stages of this planning cycle is to assess the environment that you have in place today in order to understand its potential for virtualisation. Charterhouse offers 'Assessment in a box' services to enable you to look inside your current physical environment and visualise the future, a virtual future.

'Assessment in a box' coupled with our extensive experience will enable you to understand the who, what, where, why and when of virtualising your infrastructure. The Information you will have at your fingertips will provide the ability to:

- Determine virtualisation opportunities for server consolidation and containment
- Estimate financial impact
- Build a solid business case
- Understand the environmental 'green' impact
- Demonstrate how IT can align more closely with your business

Planning for virtualisation – requirements for success

- Detailed inventory and usage data from your existing platform
- Determine your existing environments suitability
- Understand the financial impact and present financial justification to implement a virtualisation strategy
- Devise a roadmap of next steps

